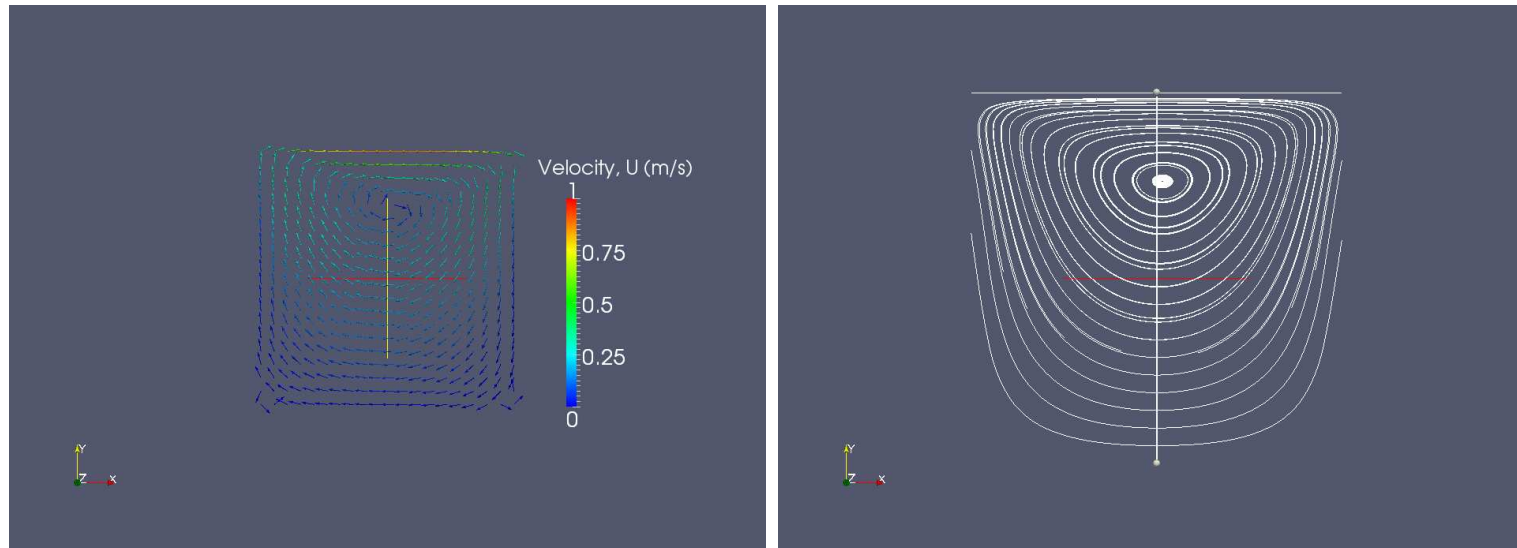
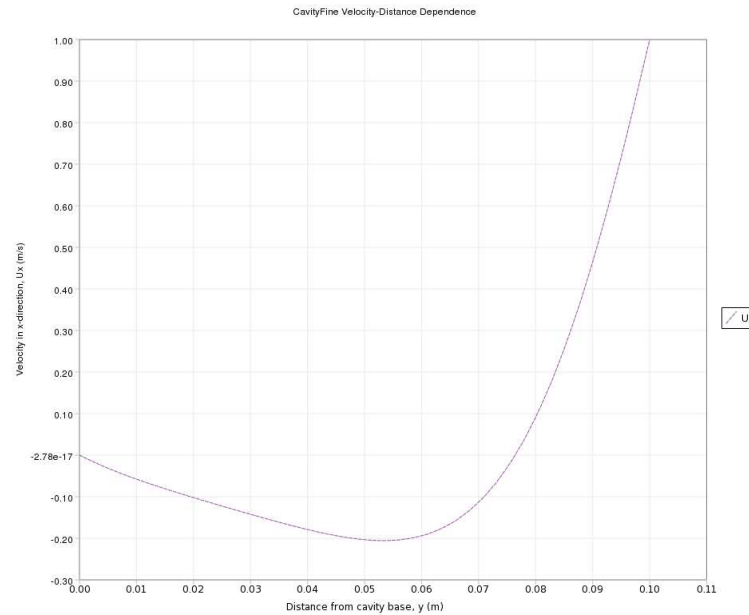
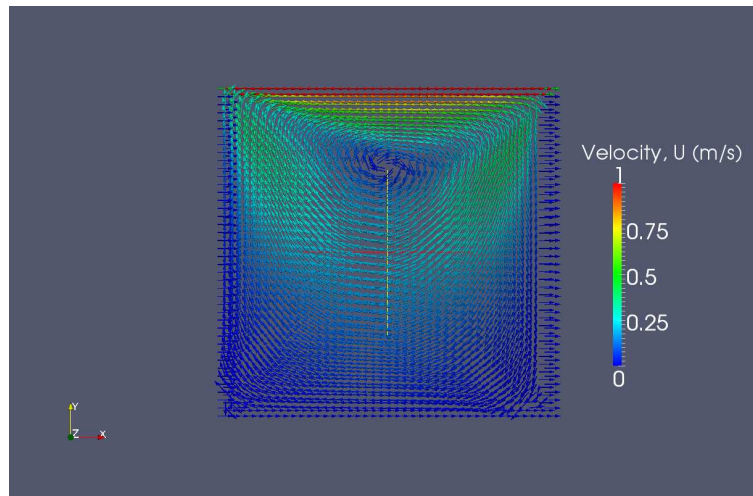


icoFoam: Cavity



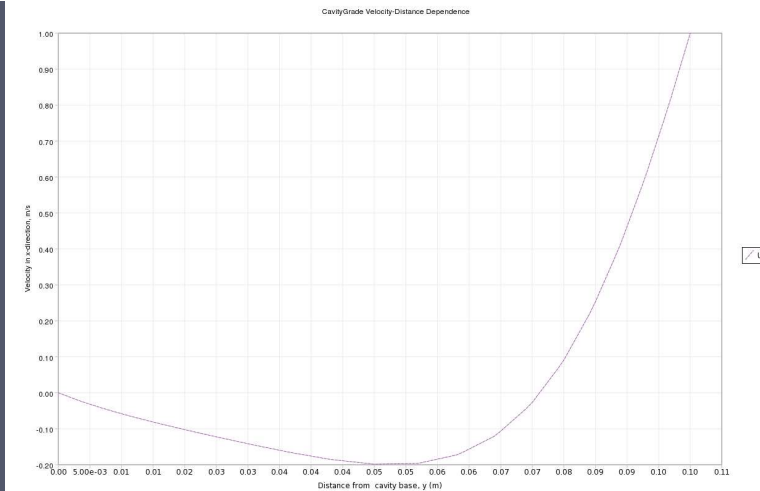
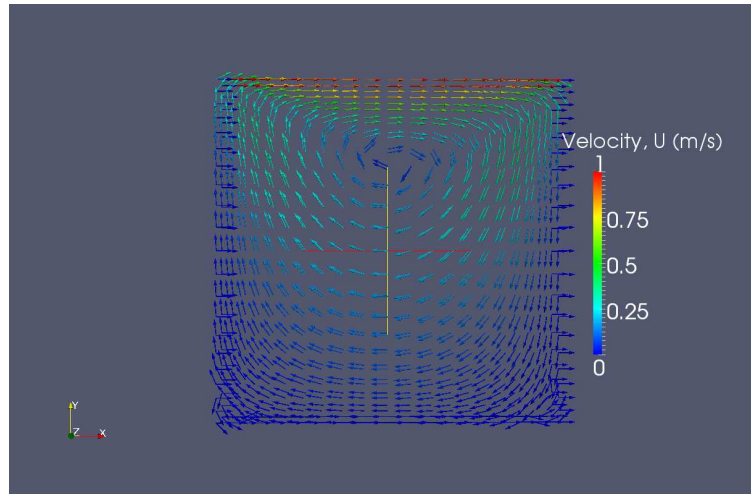
The above two pictures are made according to the OpenFOAM UserGuide!

icoFoam: Cavity Fine Mesh

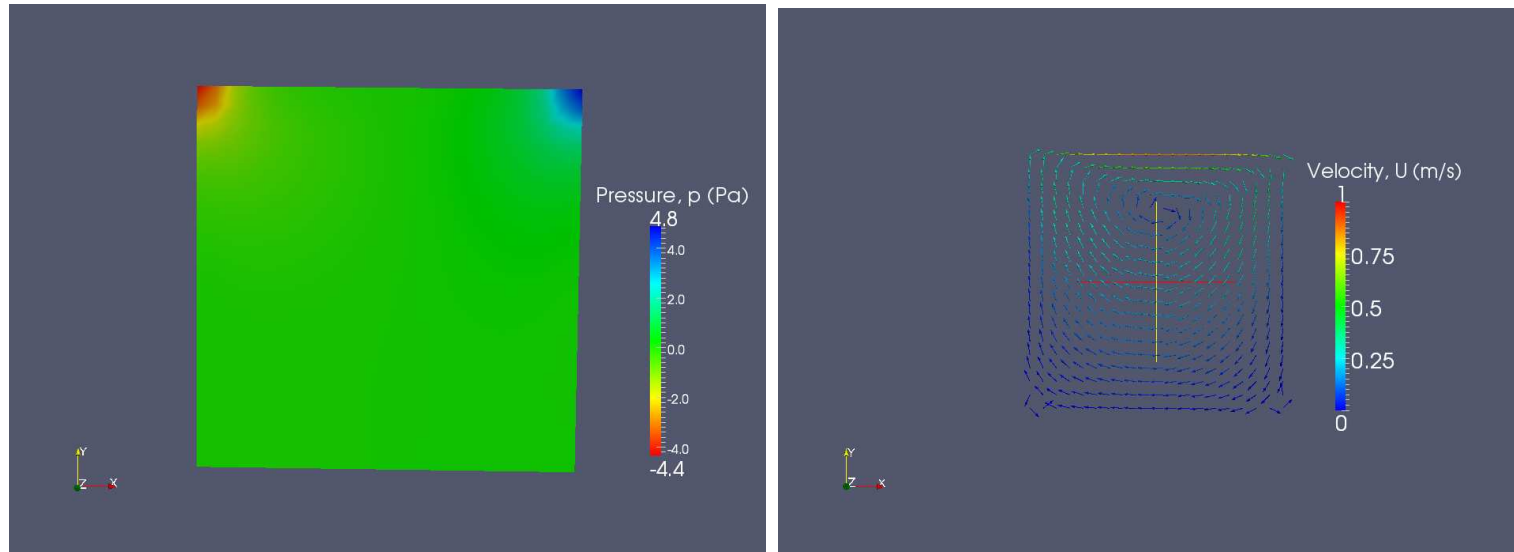


I just followed the manual!

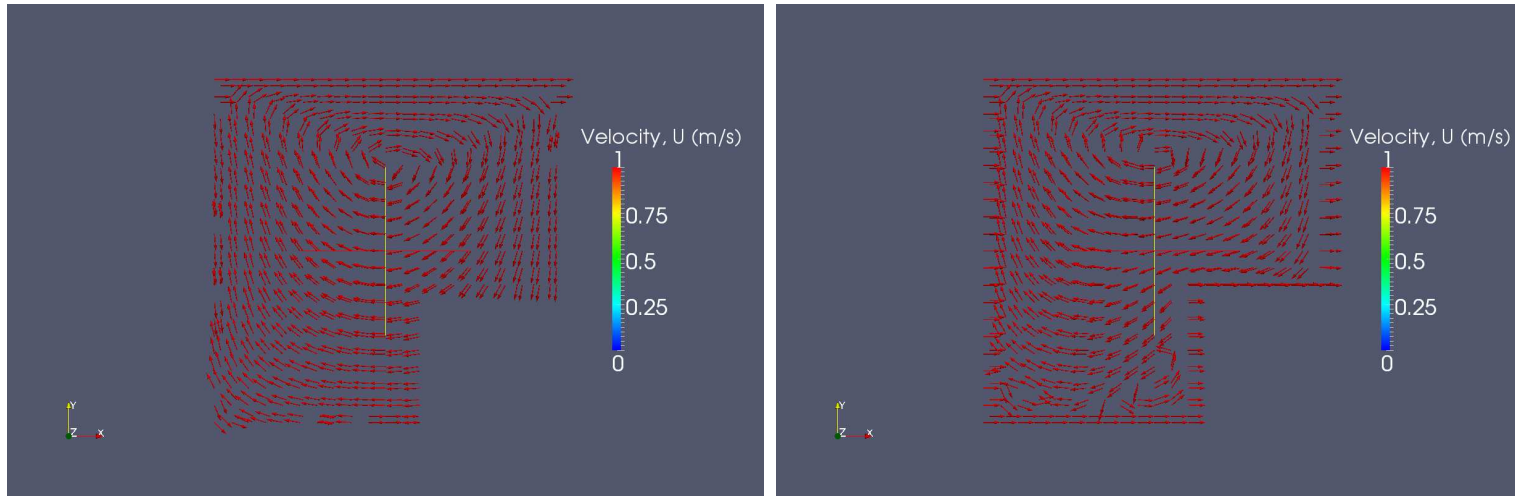
icoFoam: Cavity Grade Mesh



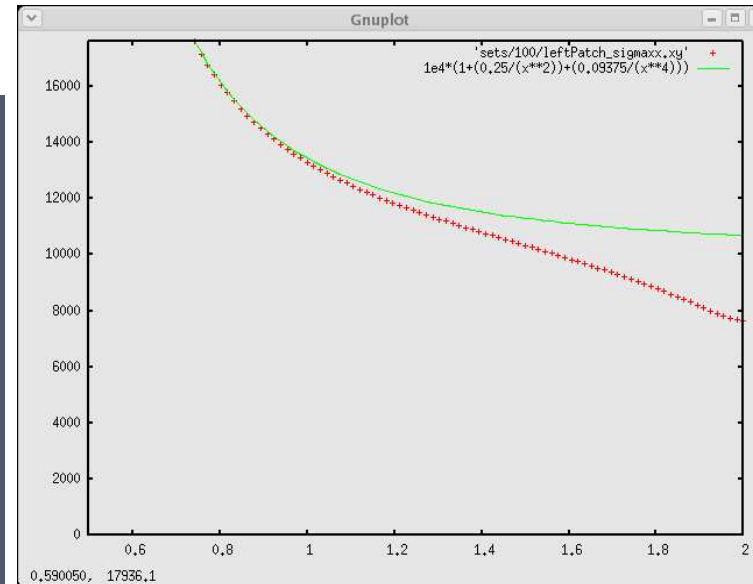
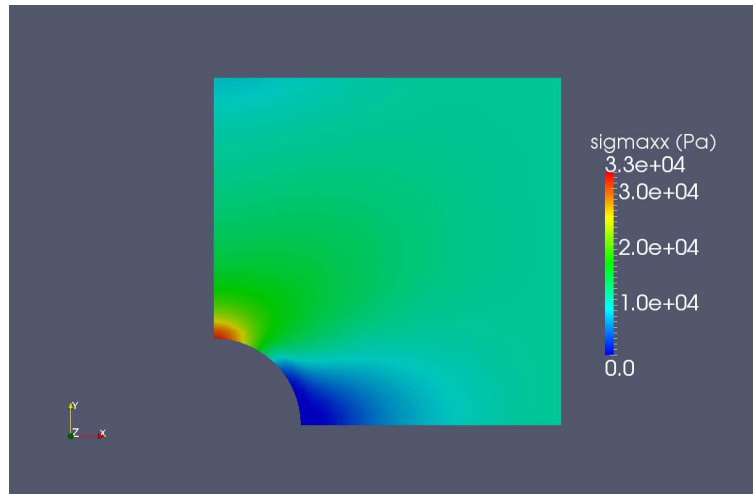
icoFoam: Cavity High Re Number



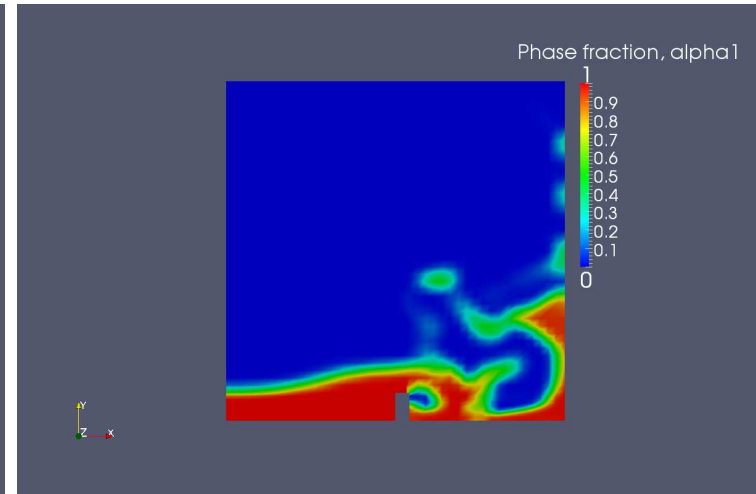
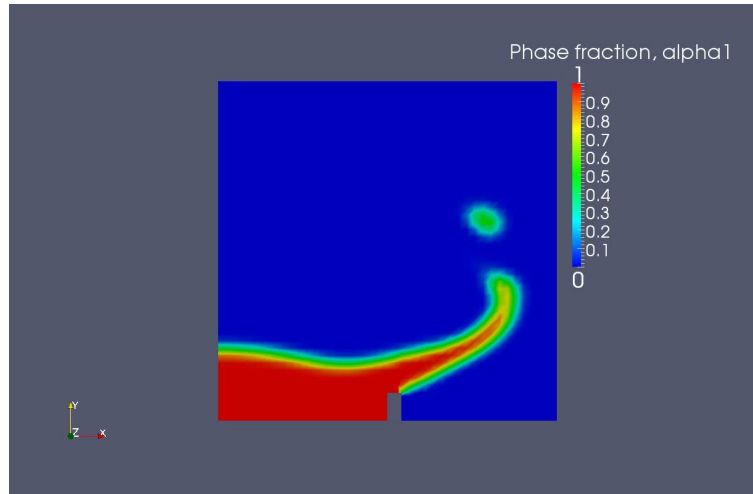
icoFoam: Cavity Clipped



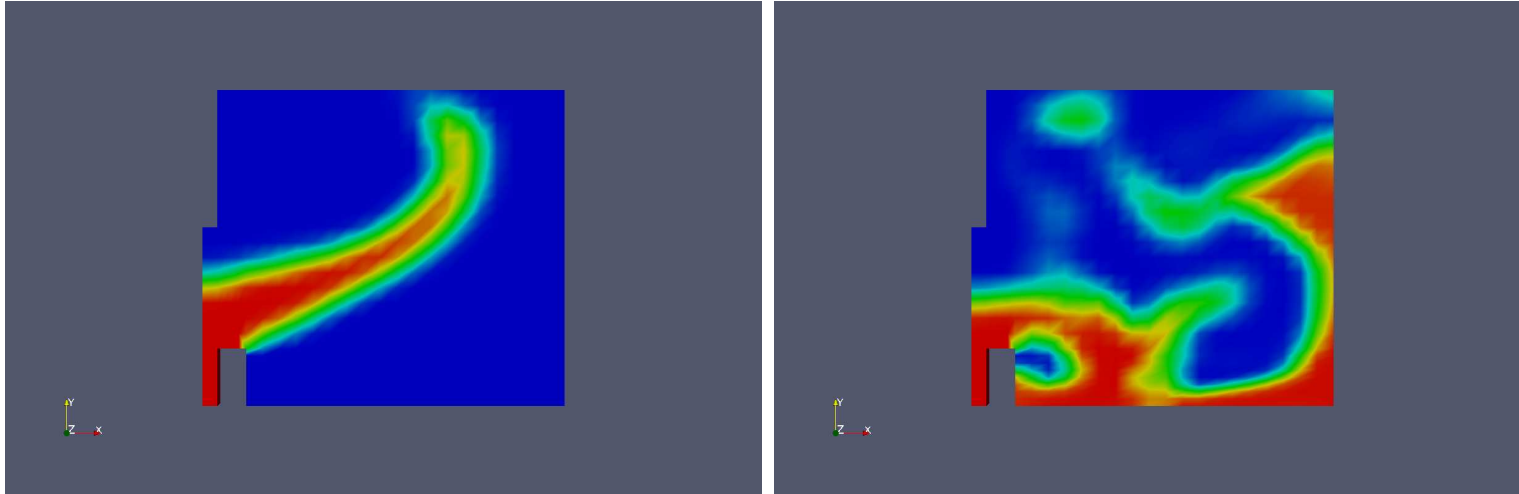
solidDisplacementFoam: plate hole



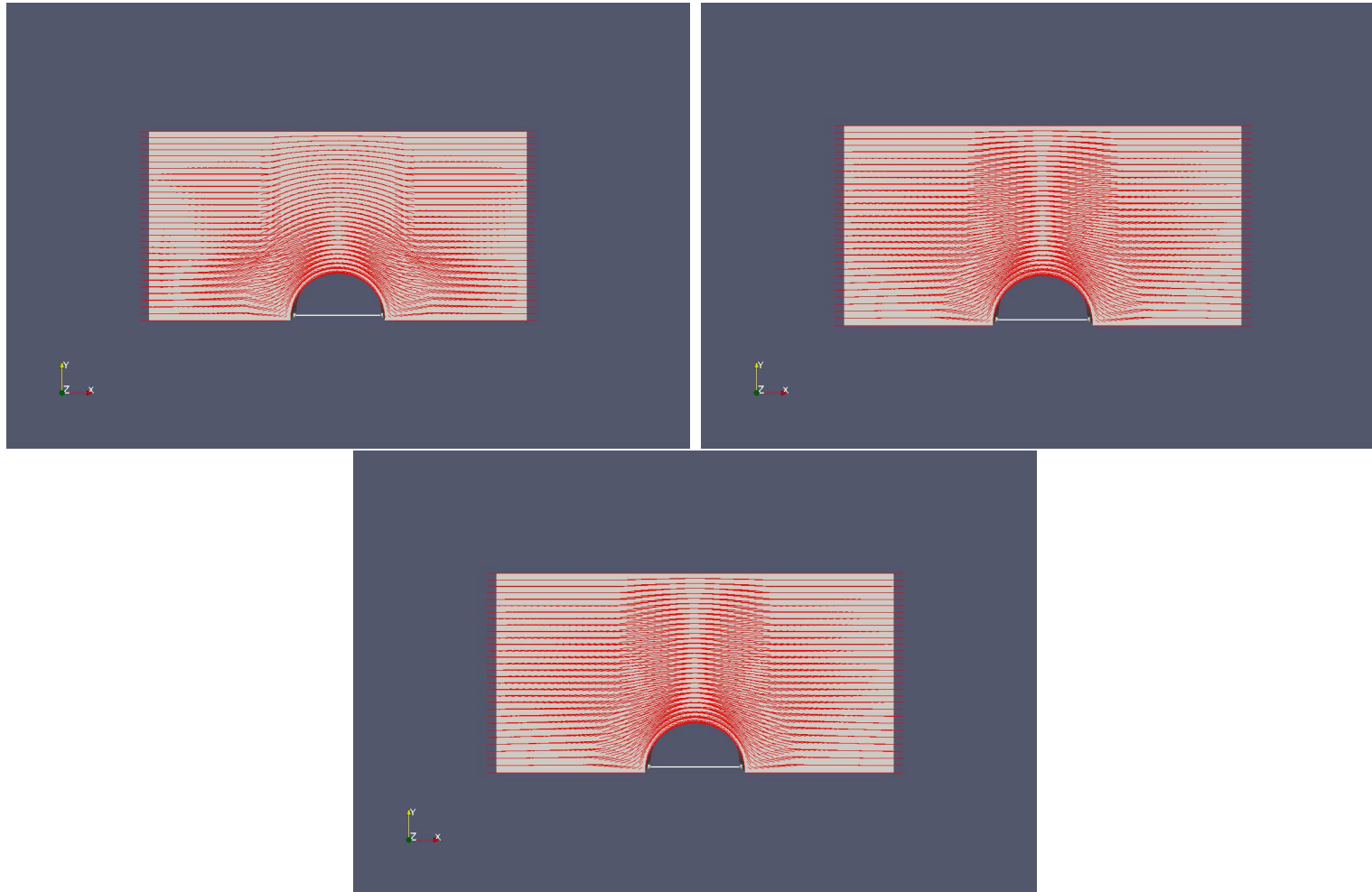
interFoam: damBreak



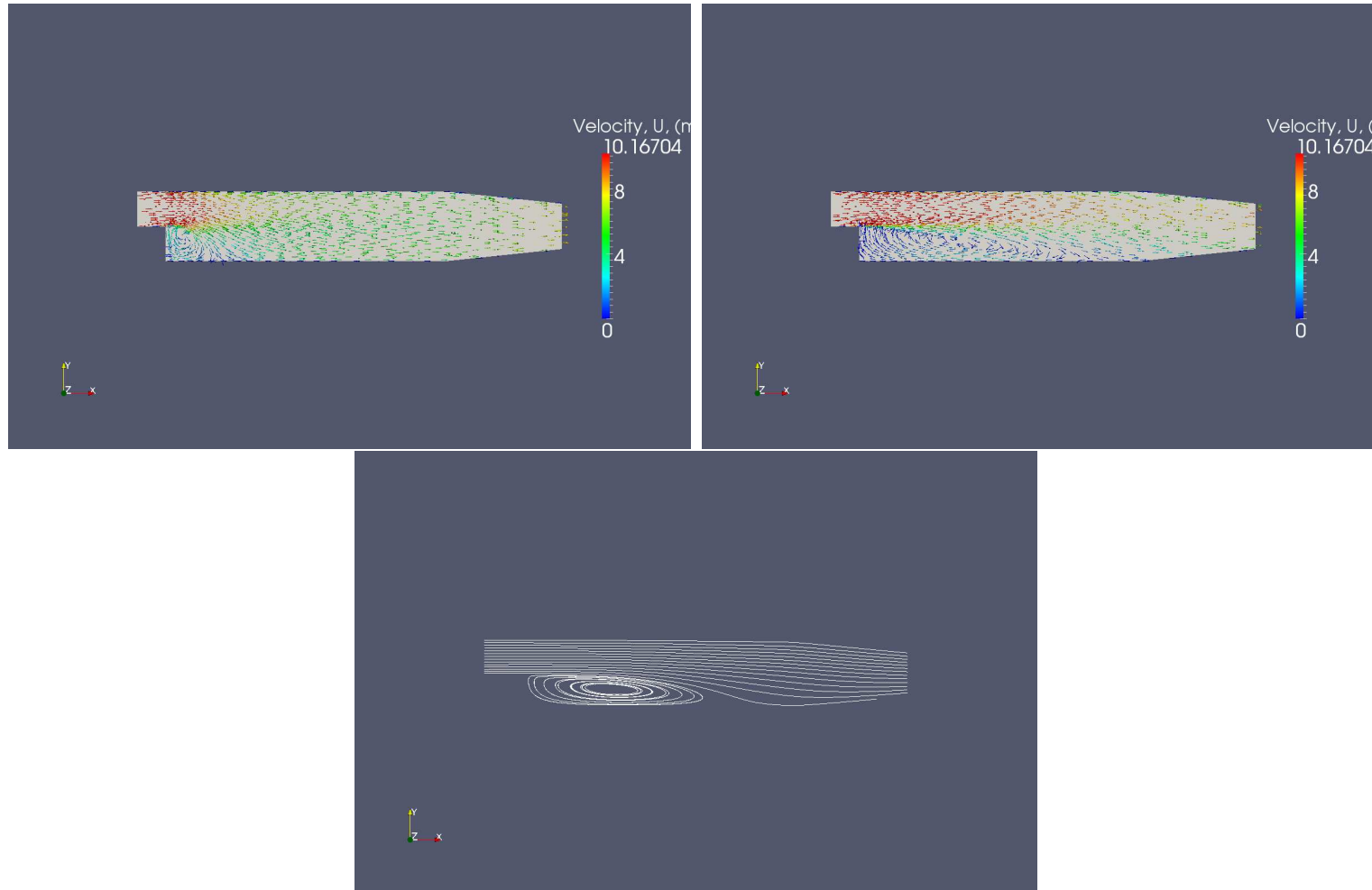
interFoam: damBreak Fine Mesh



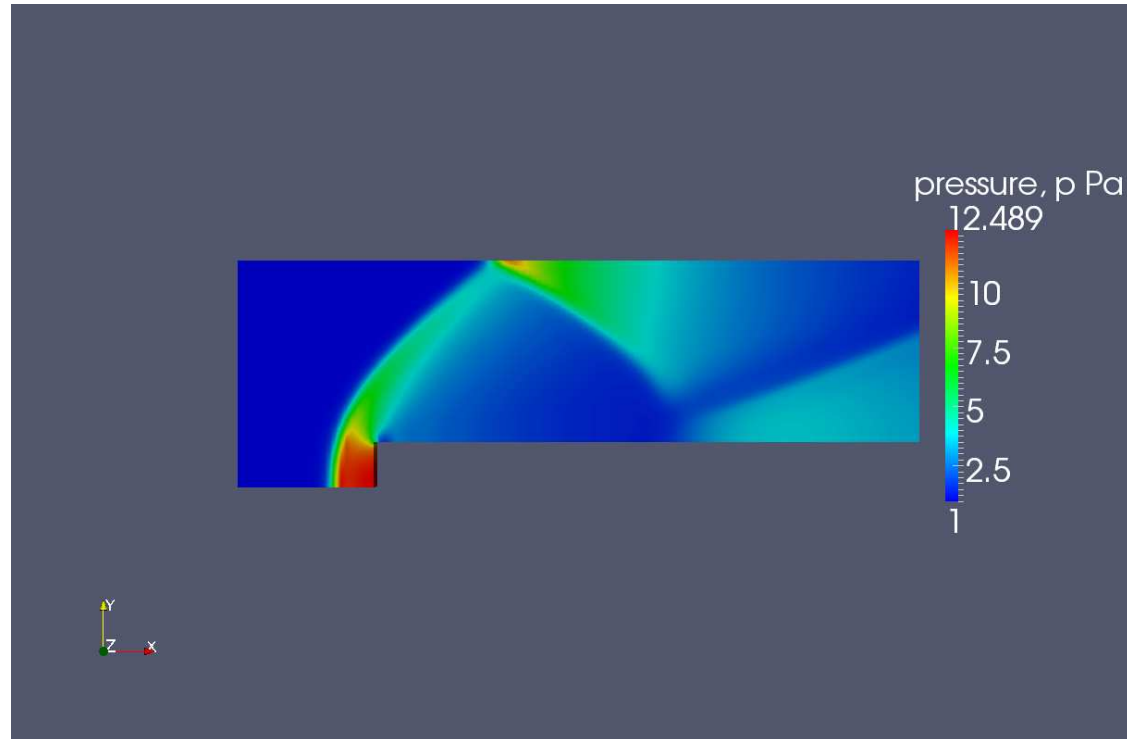
potentialFoam: cylinder



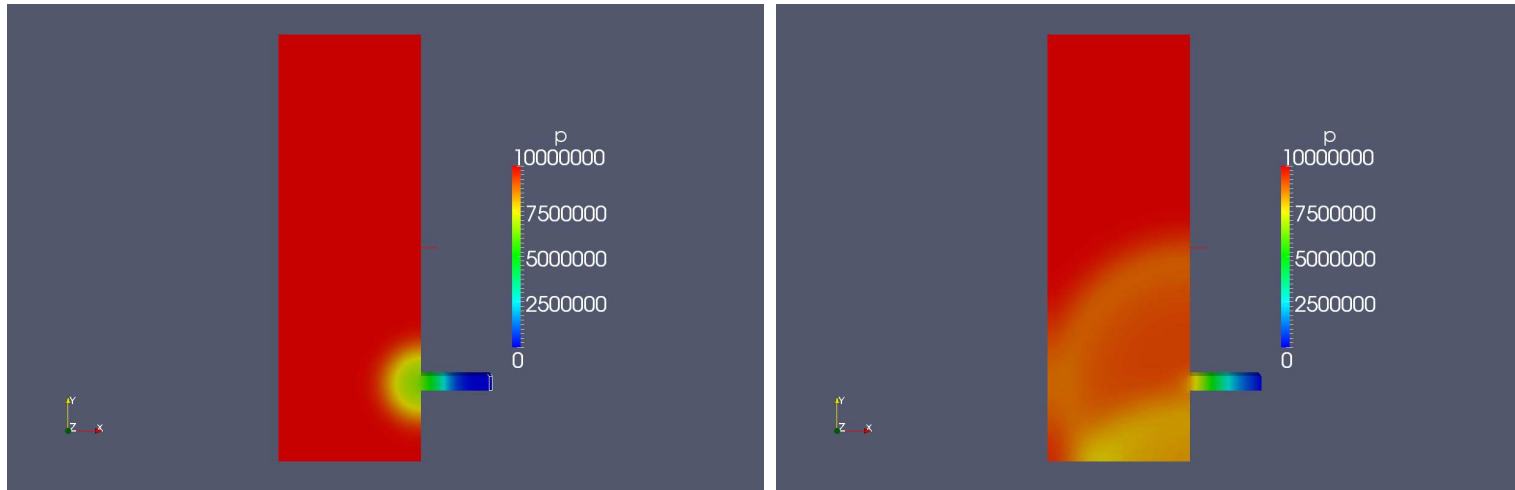
simpleFoam: pitzDaily



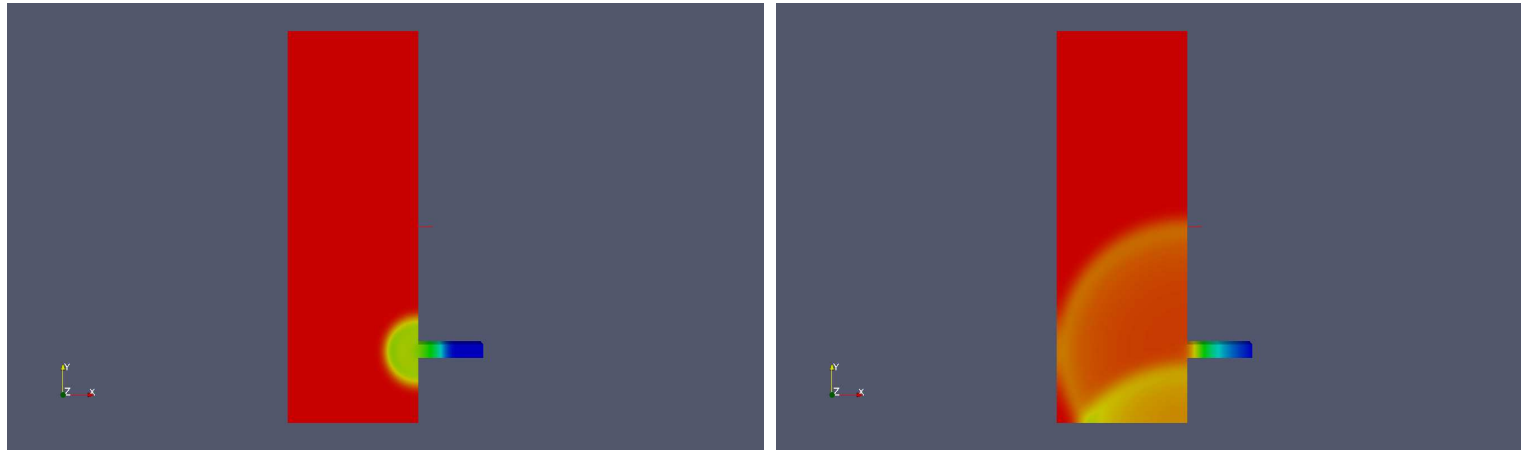
sonicFoam: forwardStep



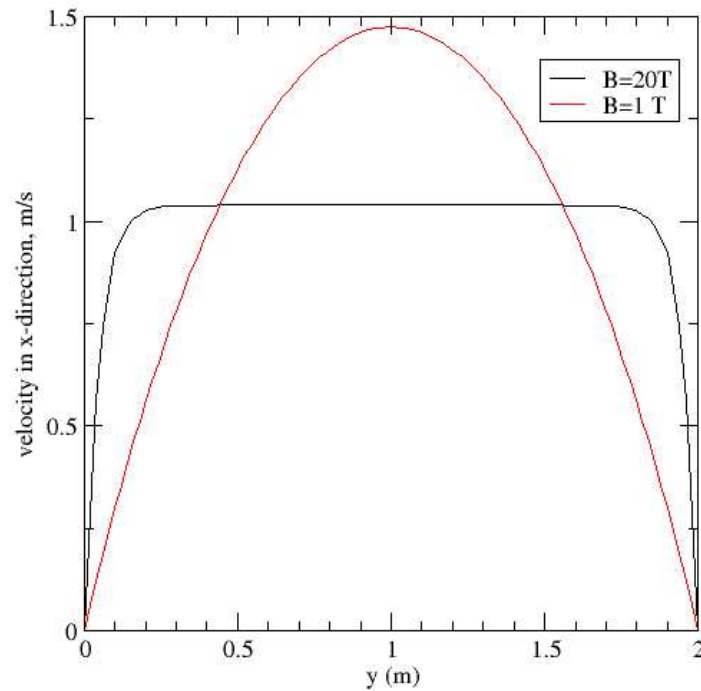
sonicLiquidFoam: decompressionTank



sonicLiquidFoam: decompressionTank Fine Mesh



mhdFoam: hartmann



This plot was made by xmgrace!